

# Freight Market Update

*presented by*

**Dean Croke**

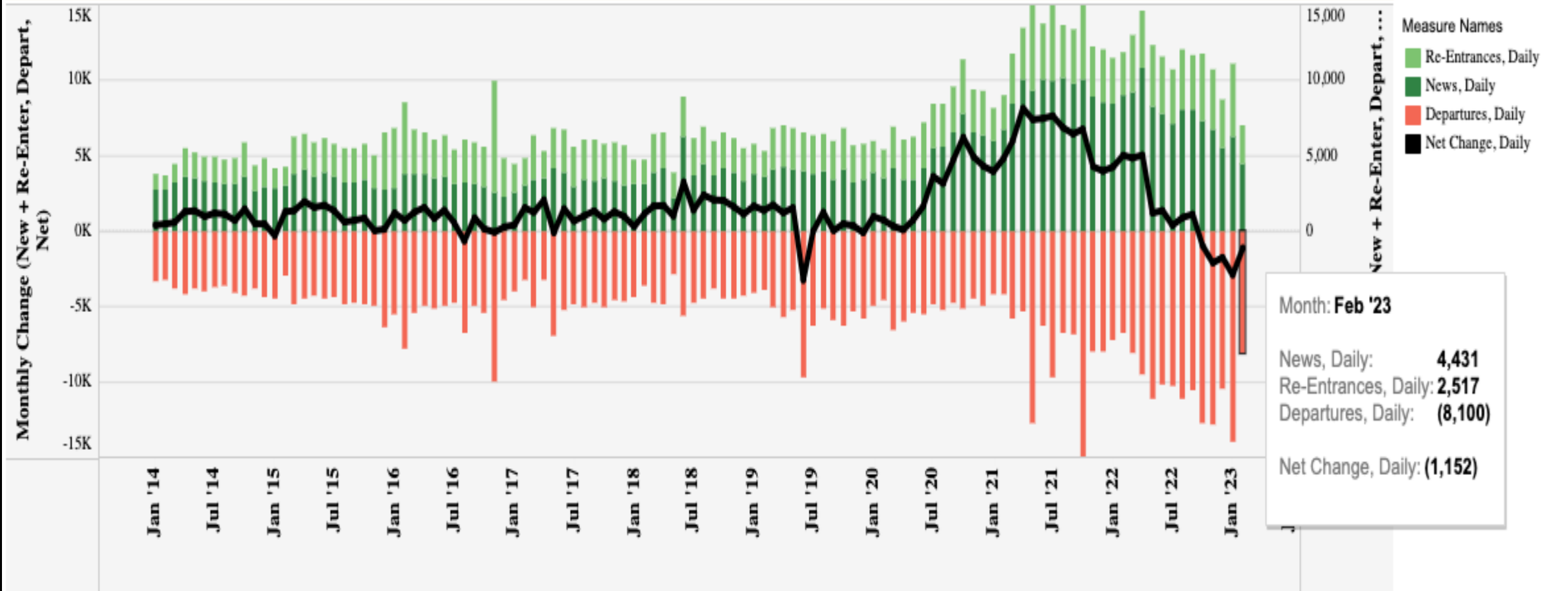
**Principal Analyst**

# Interstate Truckload Capacity Trends

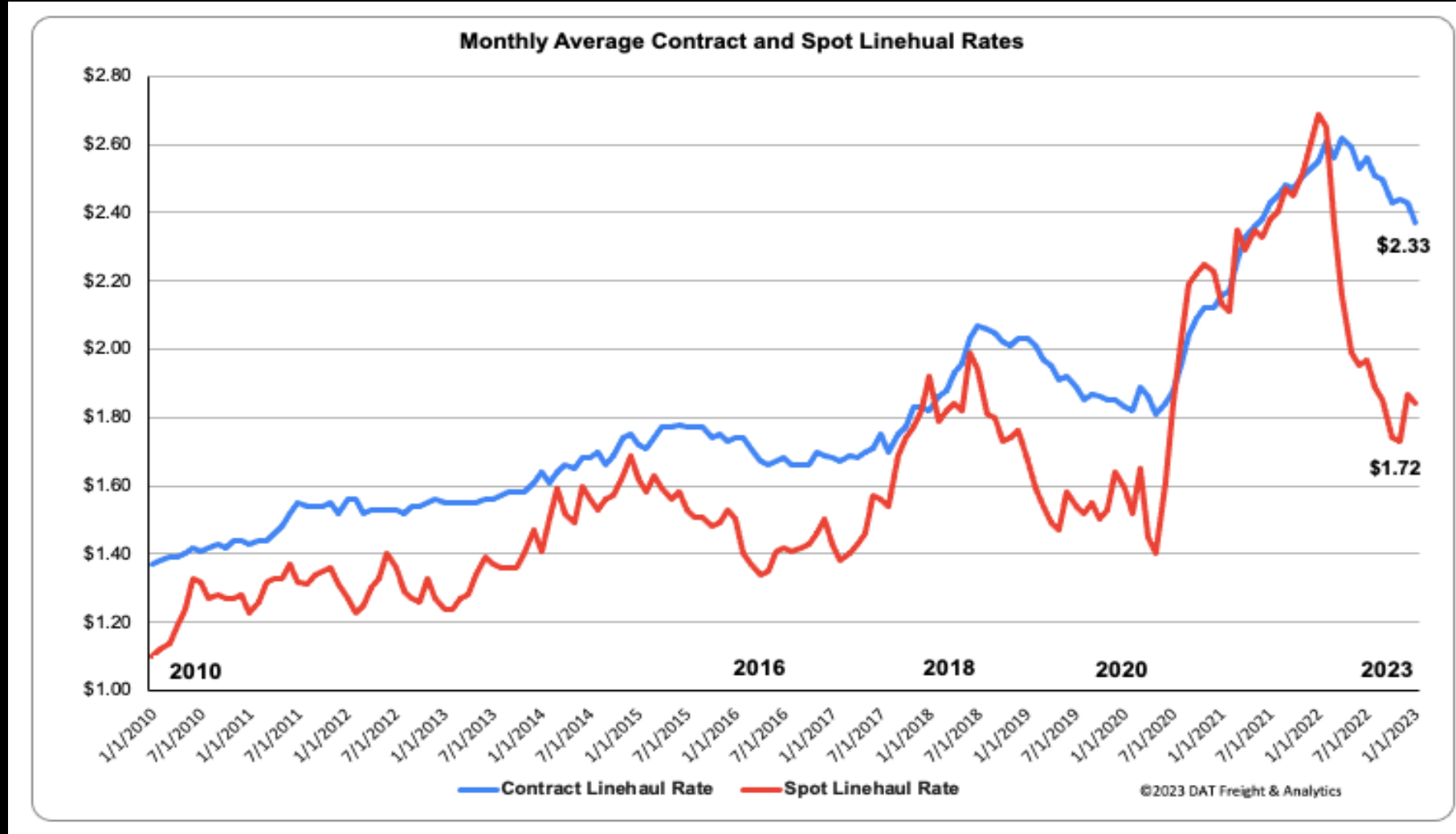
## Total Addressable Market (TAM) Monthly Changes (\*using aggregated daily changes)

based upon DOT authority data

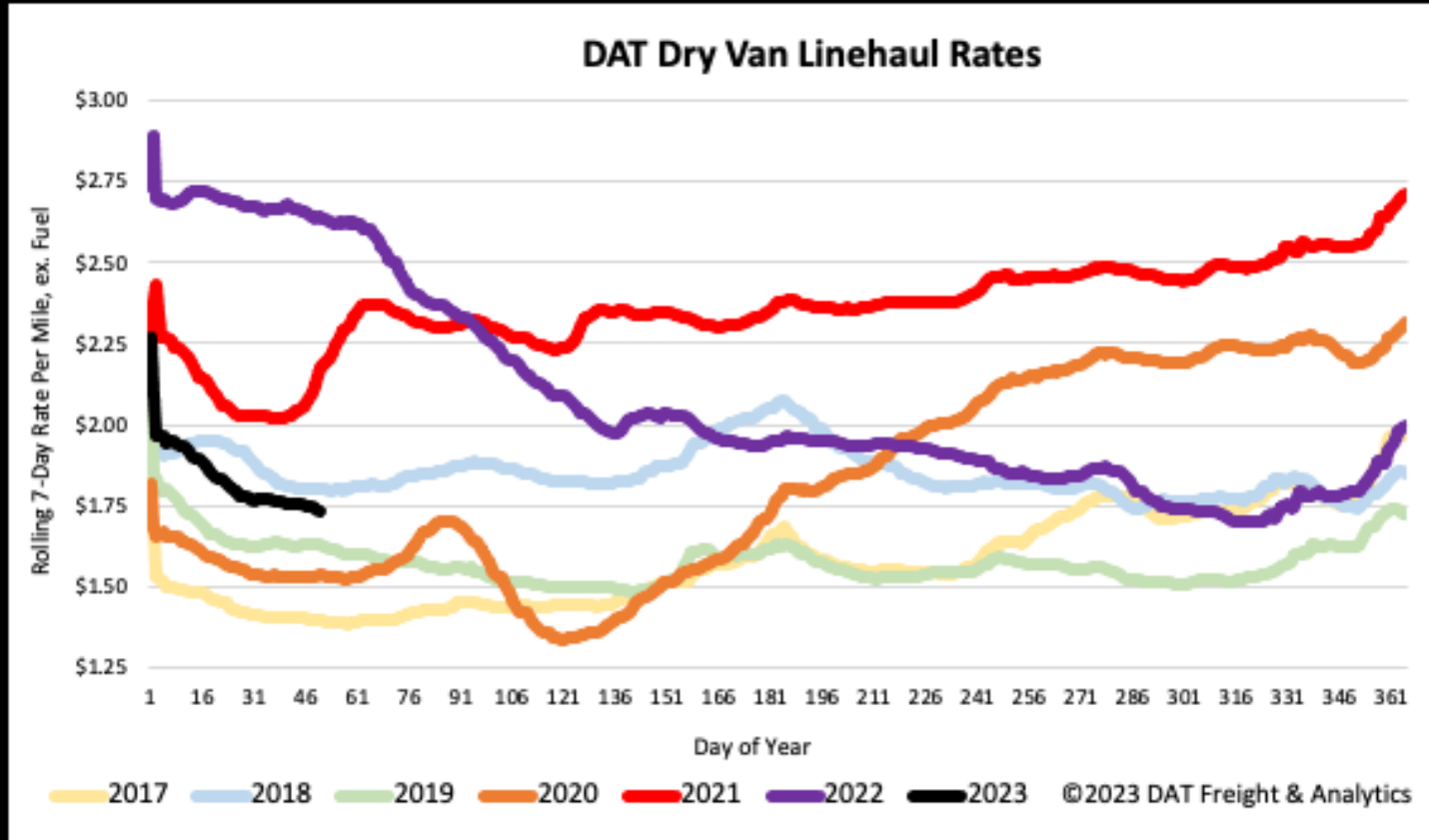
(refreshed: 2/18/2023 7:31:35 AM)



# Dry Van Rate Long-Term Trends

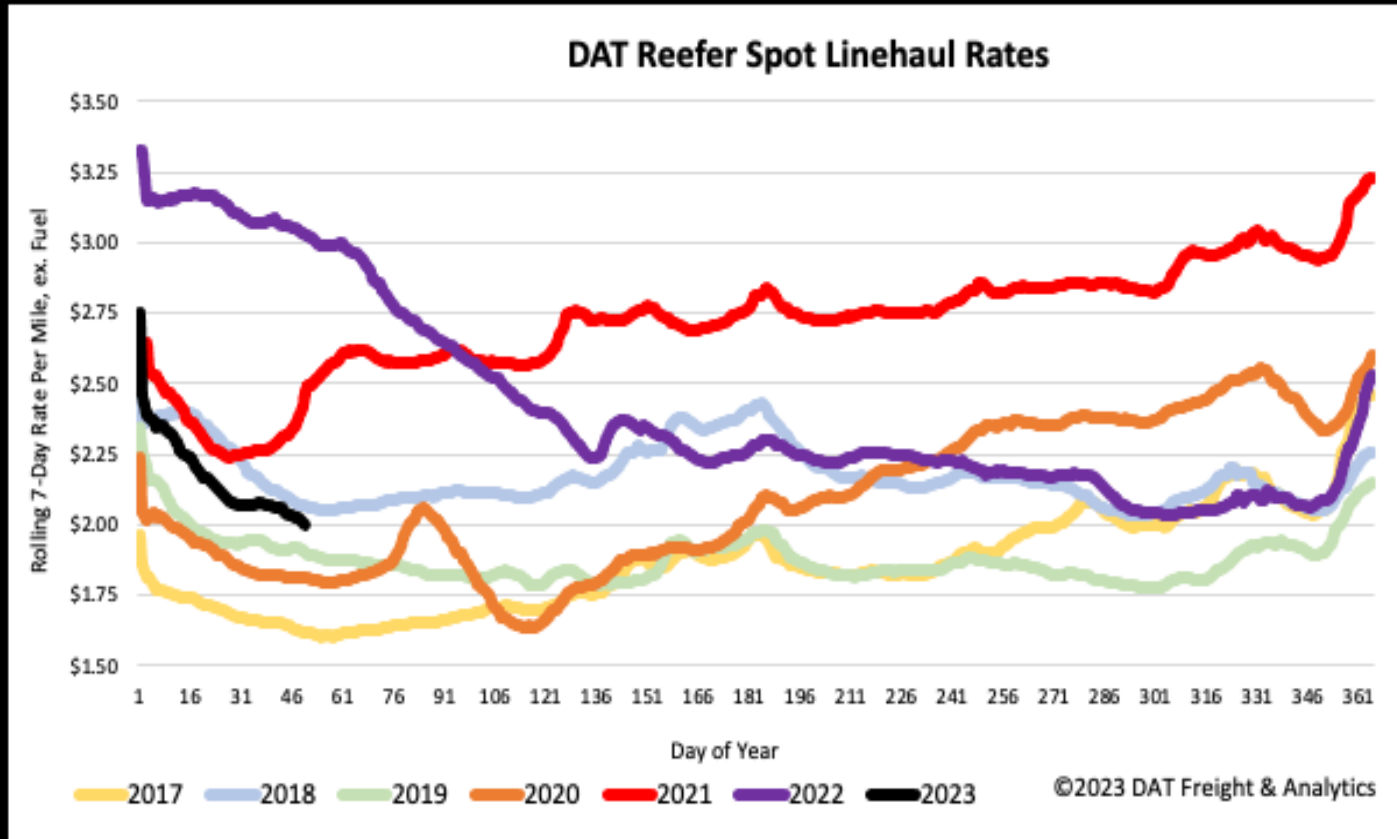


# Dry Van Linehaul Rates



- Dry van linehaul rates were tracking seasonal trends last week, although they were about \$0.20/mile higher than in 2018.
- National average dry van rate of \$1.75/mile is \$0.91/mile lower than the previous year, and \$0.22/mile lower than the top 50 dry van lanes based on the volume of loads moved, which averaged \$1.97/mile last week.

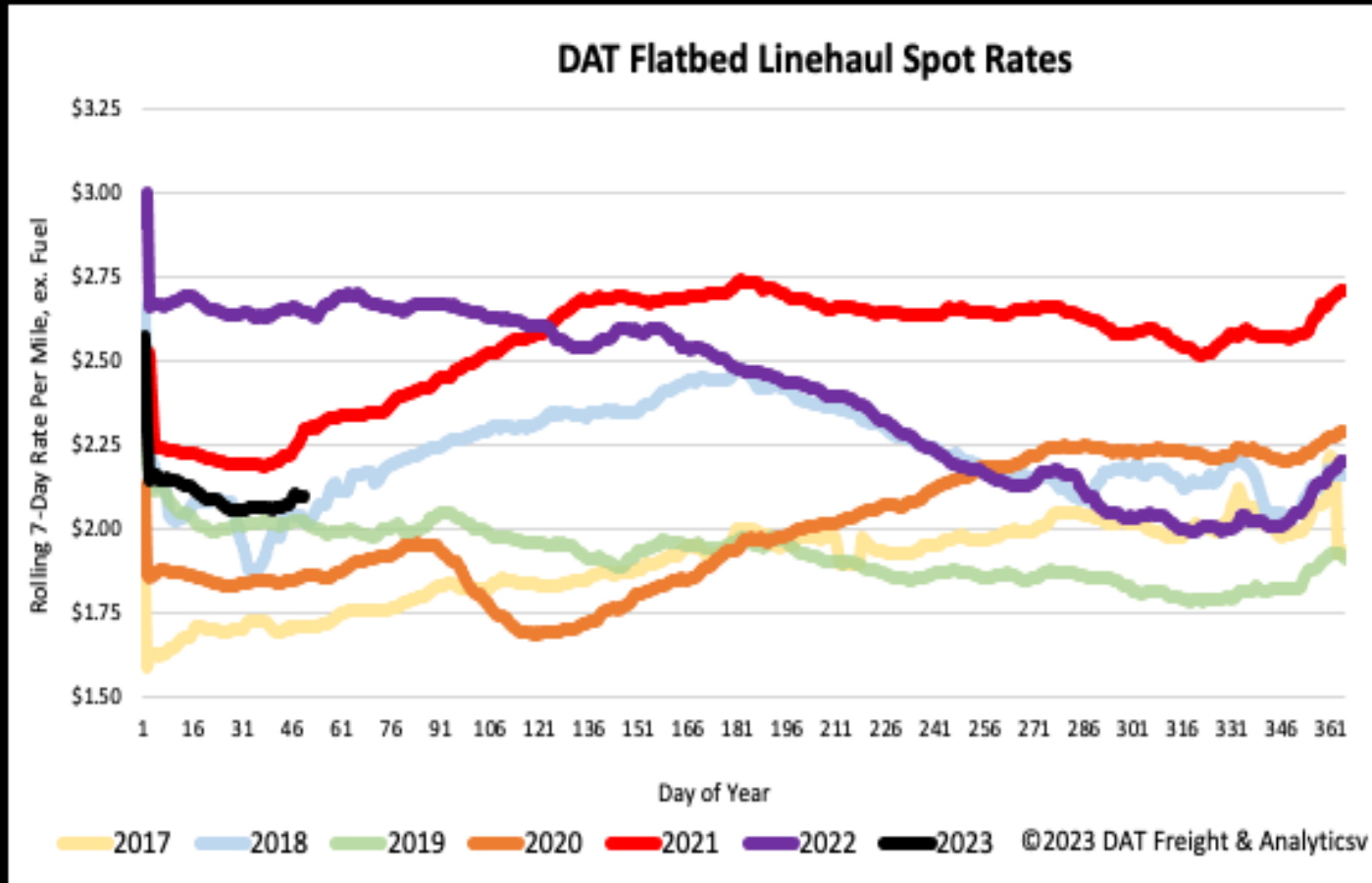
# Reefer Linehaul Rates



- Reefer linehaul rates have decreased by \$0.33/mile since the start of the year, following another \$0.02/mile decrease last week.
- At \$2.04/mile, reefer spot rates are \$1.03/mile lower than the previous year, \$0.08/mile higher than in 2019, and lower by the same amount compared to 2018.



# Flatbed Linehaul Rates



- Flatbed linehaul spot rates increased for the fourth week following last week's \$0.03/mile increase to a national average of \$2.13/mile.
- Flatbed rates are \$0.07/mile higher than in 2018 and 2019 but just over \$0.50/mile lower than the previous year.

# Contract Rate Trends



## Dry Van

- Active rates down 0.5%
- Replacement rates negative 11%.



## Temp Control

- Active rates down 0.5 %
- Replacement rates negative 9%



## Flatbed

- Active rates down ½ %
- Replacement rates negative 5%



## Intermodal

- Active rates is down 2%
- Replacement rates negative 4%

