

**ACT SEMINAR**

# **A LOOK AT OUR EVOLVING INDUSTRY, MEGA TRENDS, AND A FUTURE-FOCUSED CORPORATE CULTURE**

Rick Mullinix  
President & COO of Great Dane



# 4.0



# TECHNOLOGY



Cause  
&  
Solution



# TECHNOLOGY



Cause  
&  
Solution



\$2.4 T  
Total  
Spending



# SUSTAINABILITY

**Governments and companies worldwide are pledging to achieve net-zero emissions of greenhouse gases.**



# ELECTRIFICATION

## HOW IS SUSTAINABILITY DRIVING THE INDUSTRY?

- Government regulations
- Purely electric operations
- e-axles on equipment
- Quieter vehicles







# GREAT DANE'S ALL-ELECTRIC REEFERS

SHOWCASED AT TRADESHOWS

- Trailer power generation
- Partnerships for all-electric solutions







# **CLEAN ENERGY**

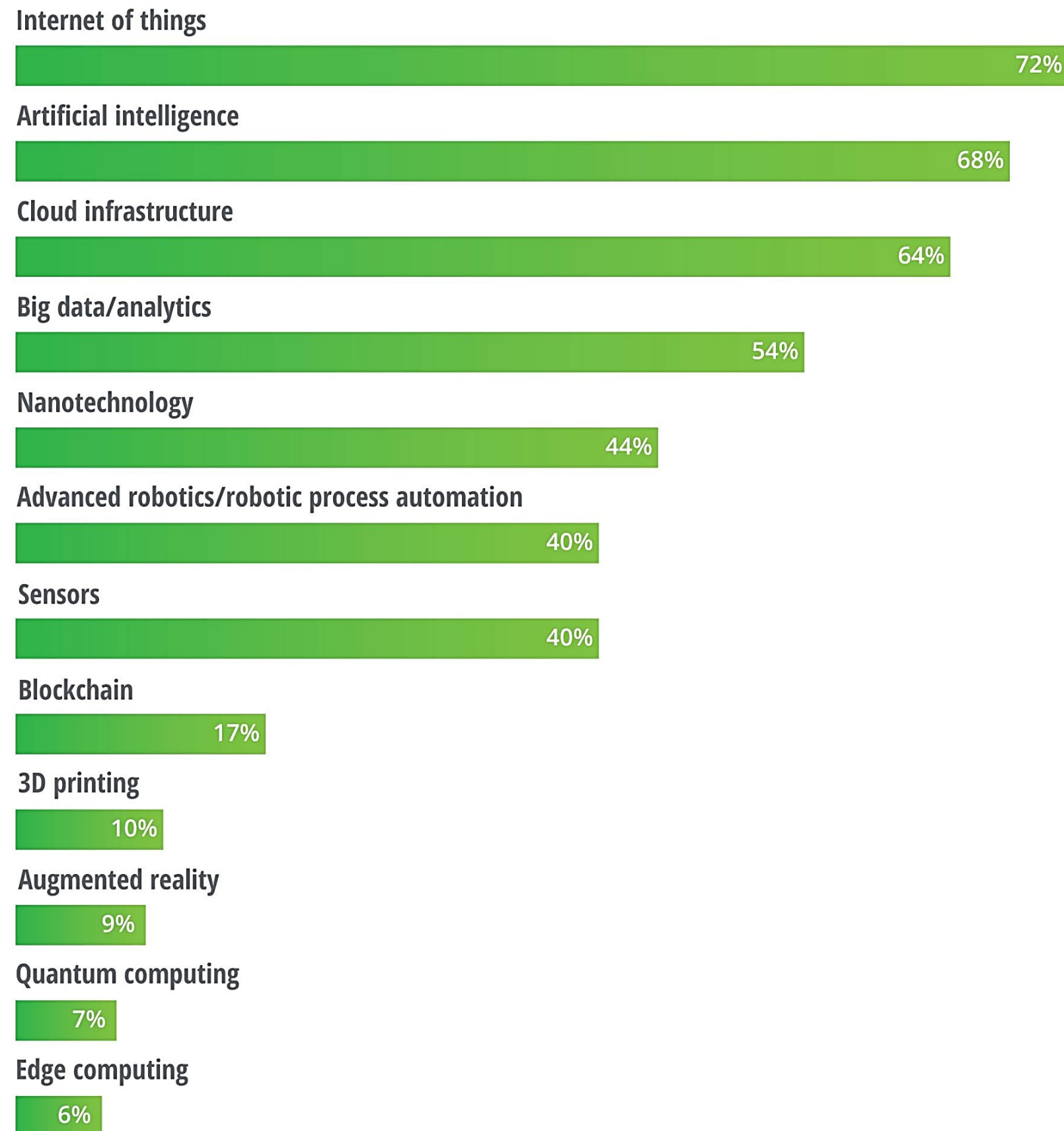
**REDUCING EMISSIONS USING HYDROGEN**

- **Long-haul applications**
- **Building infrastructure**





Which Industry 4.0 technologies are expected to have the most profound impact on your organization?



# DELOITTE GLOBAL

**“It is already here**  
and is top of mind for  
C-suite executives and  
government agencies  
responding to the  
**rapid changes**  
resulting from  
advanced digital  
technologies.”





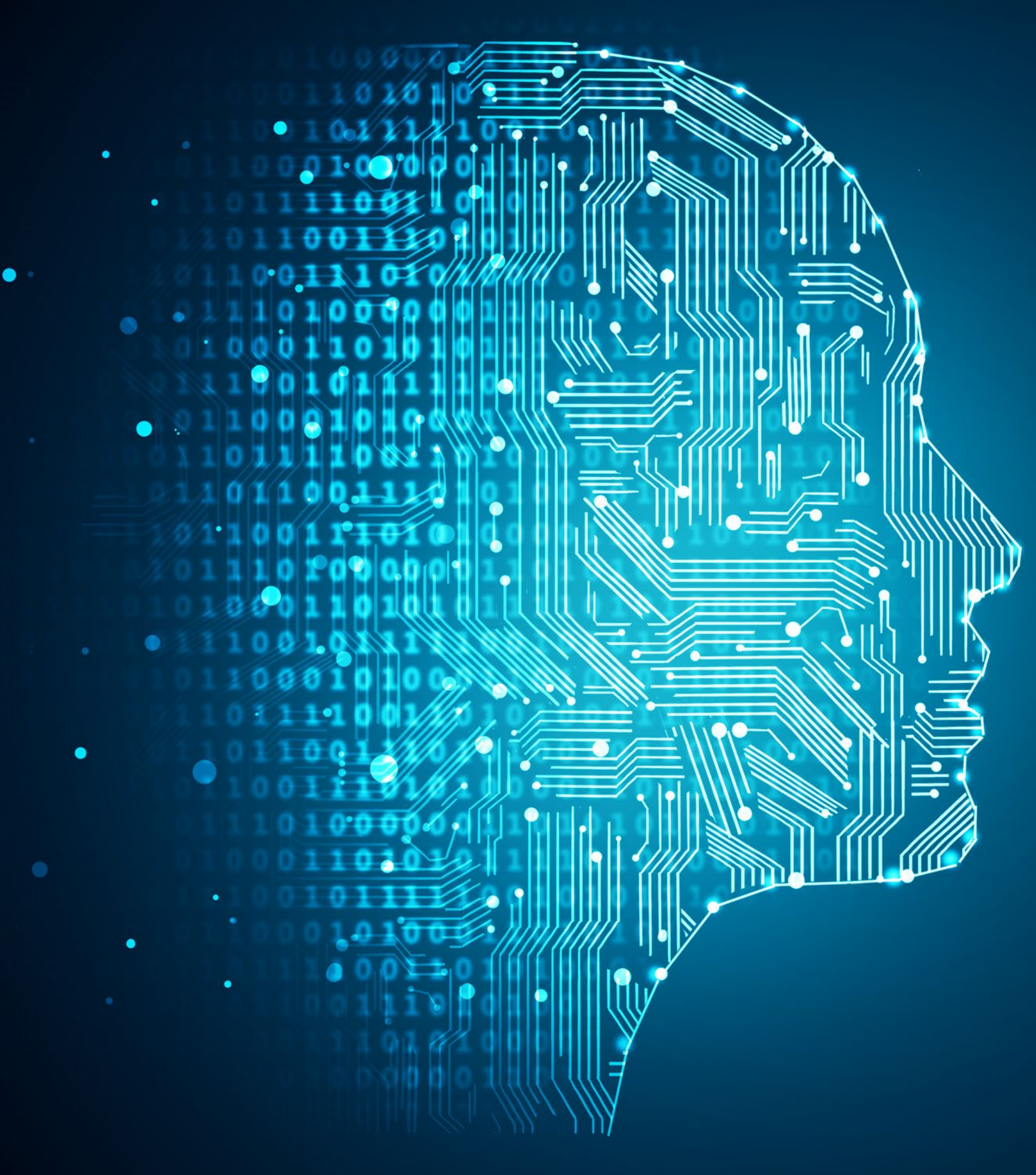
# TELEMATICS

## METRICS THAT MATTER

- Vehicle safety and health
- Interoperability







# **DIGITALIZATION**

## **PROCESS AUTOMATION**

- **Artificial Intelligence**
- **Connected, transparent, seamless, efficient ecosystems**

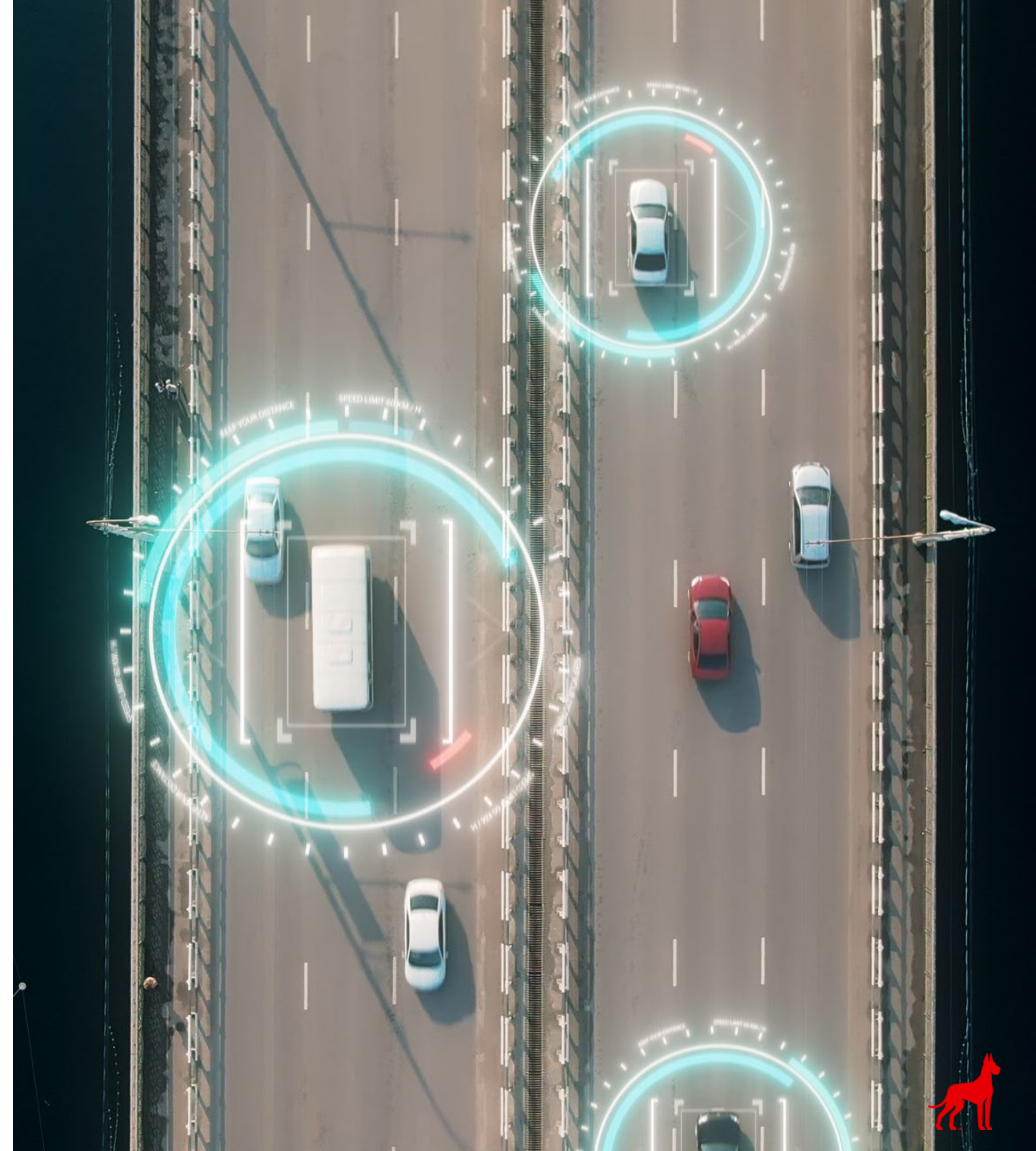




# AUTONOMOUS TRUCKING

TRANSFORMING THE SUPPLY CHAIN INDUSTRY

- Virtual drivers
- Smart trailers







# LAST MILE LOGISTICS

## NEW INNOVATIONS

- Growing demand for rapid fulfillment
- Technology partnerships





**ACT SEMINAR**

# **CURRENT AND FUTURE HEALTH OF OUR INDUSTRY**





**Law provides  
\$550 billion  
from fiscal  
years 2022-2026**

**BIPARTISAN  
INFRASTRUCTURE  
LAW**

**The largest  
concentration of  
projects will be  
east of the Mississippi**



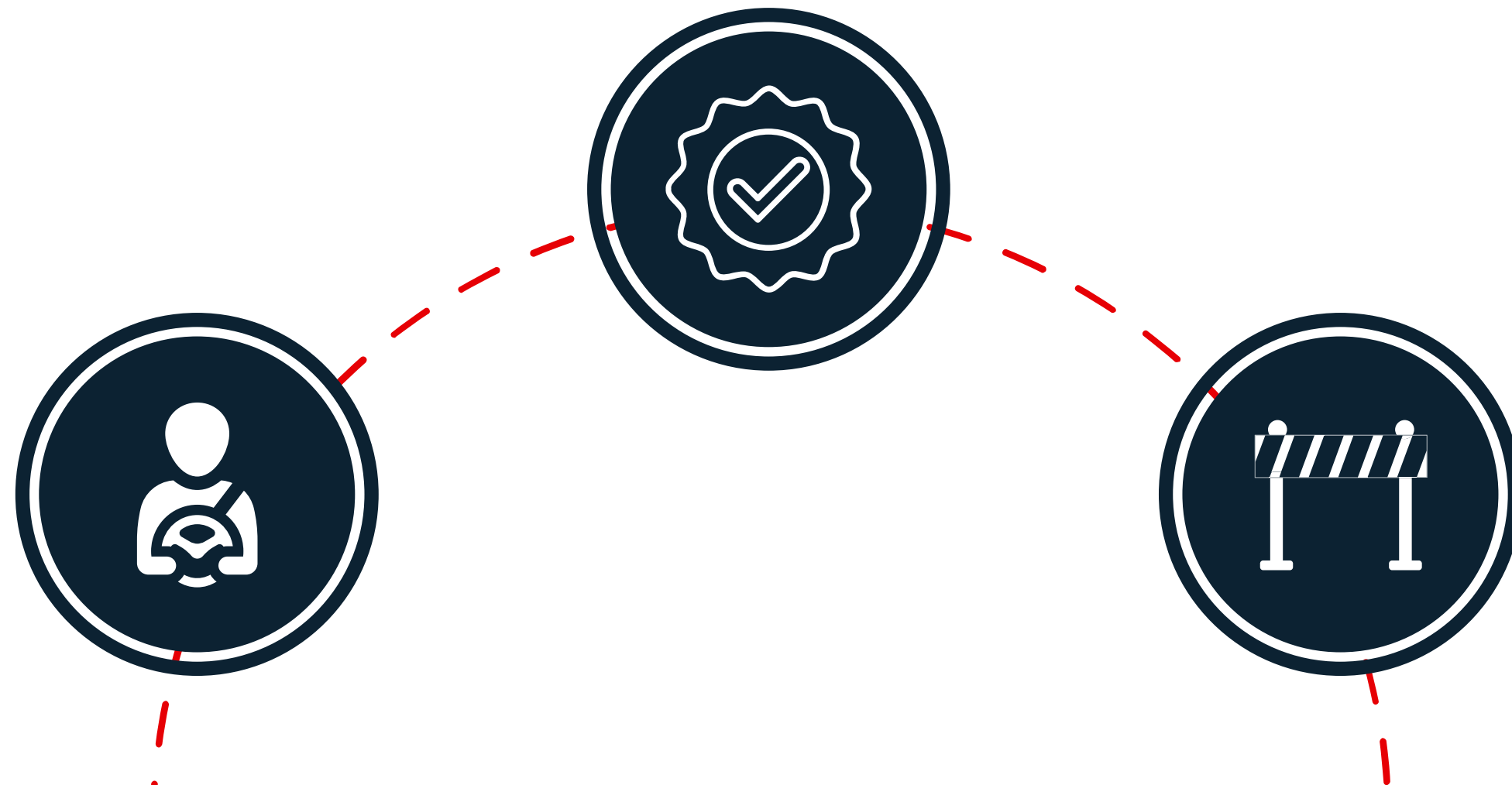


# PLAN FOR THE INCREASED DEMAND

PROMOTE THE VALUE OF YOUR EQUIPMENT

RECRUIT AND RETAIN EMPLOYEES

BE FAMILIAR WITH FUNDING NEAR YOU





# INVEST IN YOUR CORPORATE CULTURE

- **Invest in a workforce skilled in technology**
- **Provide training and leadership**
- **Remember the human connection**



# GREAT DANE'S CORPORATE CULTURE

FAMILY-FOCUSED, CUSTOMER-FOCUSED AND FUTURE-FOCUSED

